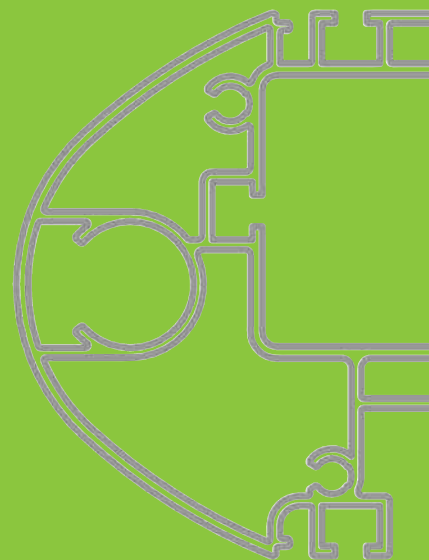
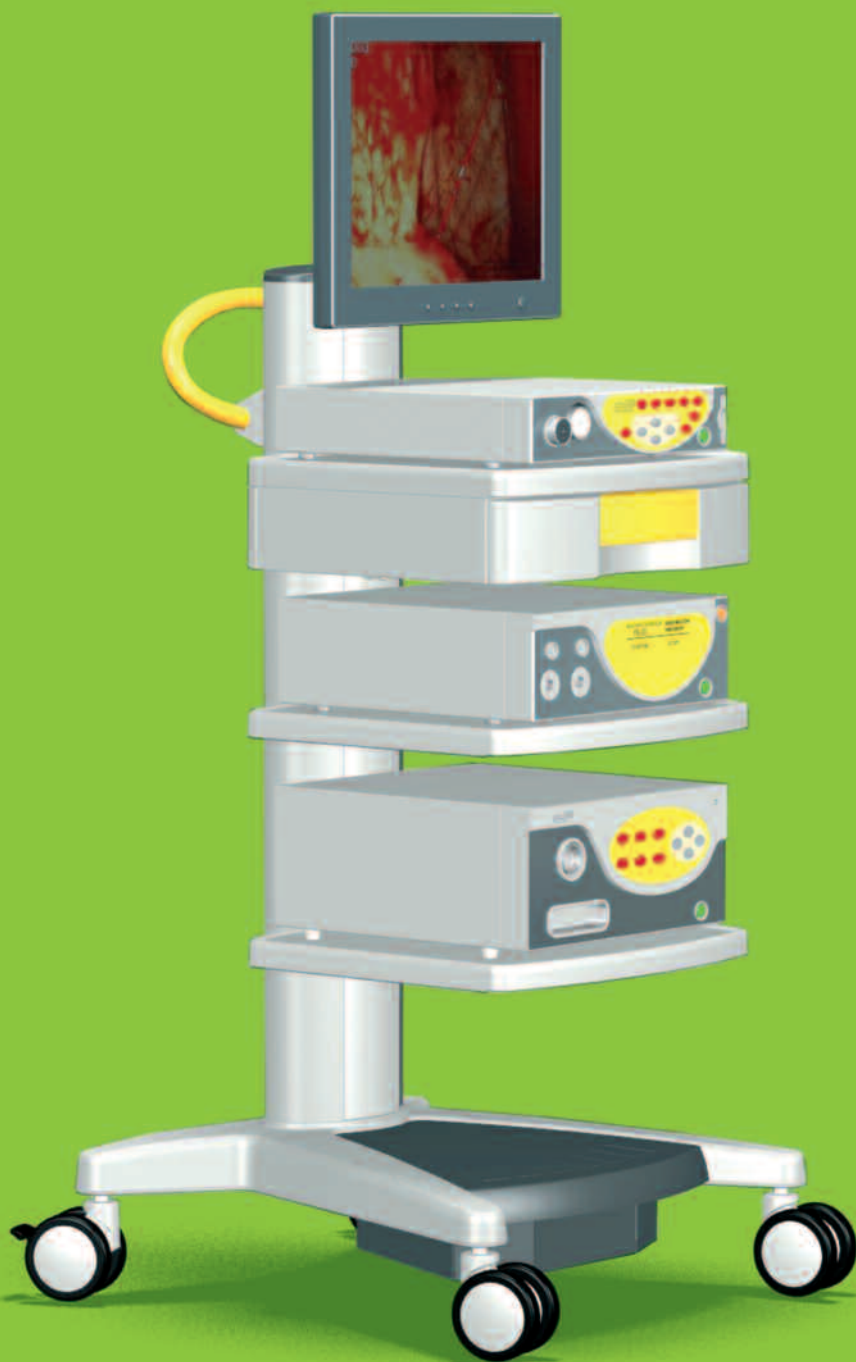
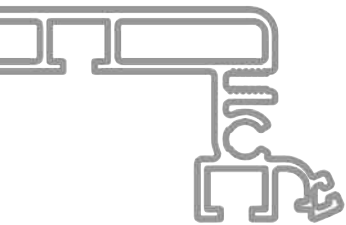


pro-cart



Our contribution to development in medical technology



Progress as a challenge:

- The most advanced, complex investigation and treatment methods
- Ever more compact medical equipment where performance and functionality achieves totally new dimensions
- Commercial and ecological aspects of hospital and practice management
- And the highest specifications for safety and hygiene demand new developments in the area of mobile equipment carts

Our contribution – **pro-cart**

A new generation of mobile equipment carts for medical technology



■ Table of Contents

Customer benefits	2
Outstanding features	4
Design structure	6
Modular structure	8
Order pages	10
Order overview	24

pro-cart impressive in every detail



Optimum integration of isolating transformer in the basic frame



Smart cable management



Advanced, ergonomic design



One handle - twin benefit



Durable finishes that are easy to clean

Perfect functionality

- Aluminium design - high load rating despite low weight
- The shape of the base guarantees high level of stability and optimum integration of an isolating transformer

Smart cable management

- No unnecessary routing - direct cabling from unit to socket strip
- Rubber lip permits cable entry and exit over the entire height of the support column
- Fold-out cover extrusion delivers easy access for service and/or assembly operations. Latch mechanism also provides protective function as plug removal barrier

Consistent ergonomics

- Handle with two positions:
 - ↑ Push position at 90° angle ensures adequate freedom of movement for legs
 - ↑ Park position at 15° angle for low space requirement if the equipment cart is parked
- Drawer with one-hand locking

Attractive design

- The optimum synthesis of function and design foregrounds your equipment.
- The colour scheme can be matched to the customer's corporate image at any time.

Maximum safety

- High level of stability at full load and in any position
- Large diameter castors assist support systems in rolling effortlessly over obstacles
- Minimized danger of injury with rounded corners



Optimum hygiene

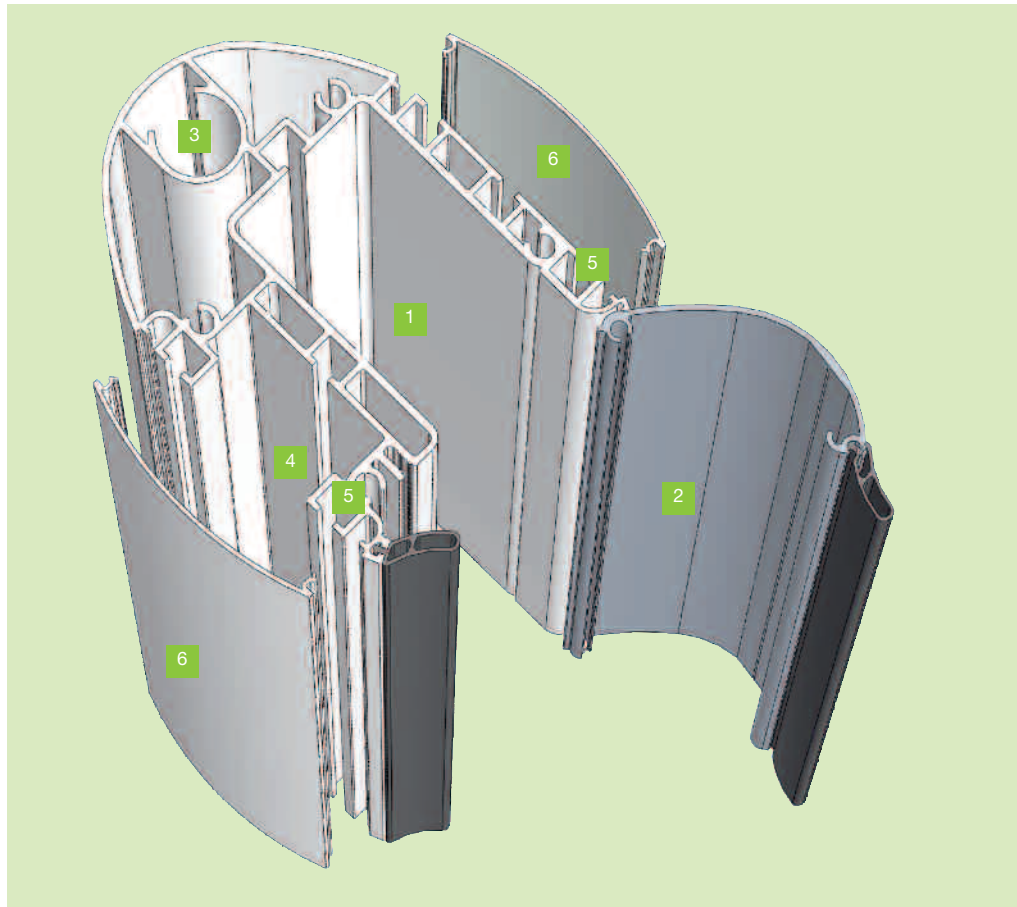
- Durable surfaces resistant to cleaning agents and disinfectants combine with an appropriate design to facilitate fast wipe-clean maintenance.

pro-cart impresses with its unique support column

The interplay of all the product features of **pro-cart** combine to provide perfect functionality. Each individual feature constitutes an important factor. But together they provide a superb link - perfect functionality for your application.

The spacious support column is the outstanding innovation in the single-column **pro-cart** equipment cart. It is divided into 5 function segments:

- 1 Central, spacious centre shaft to accommodate socket strips of different dimensions (e.g. US Hospital Grade), also offers space for outgoing cables and residual cable volumes
- 2 The fold-out cover extrusion with rubber lips permits cable entry and exit at any point along the support column. The semicircular cover facilitates access to power supply (e.g. socket strips). The latch option means that the cover extrusion also acts as a plug removal barrier.
- 3 Separate accommodation for accessories, e.g. infusion stands or endoscope holders.
- 4 Spacious cable shaft for managed routing of data lines.
- 5 Two T-slots with tapped strips (32 mm increments) on the front and rear side of the extrusion for mounting system components, e.g. shelves.
- 6 Cover strips close off unused extrusion areas.



Cross-section of **pro-cart** support column - open

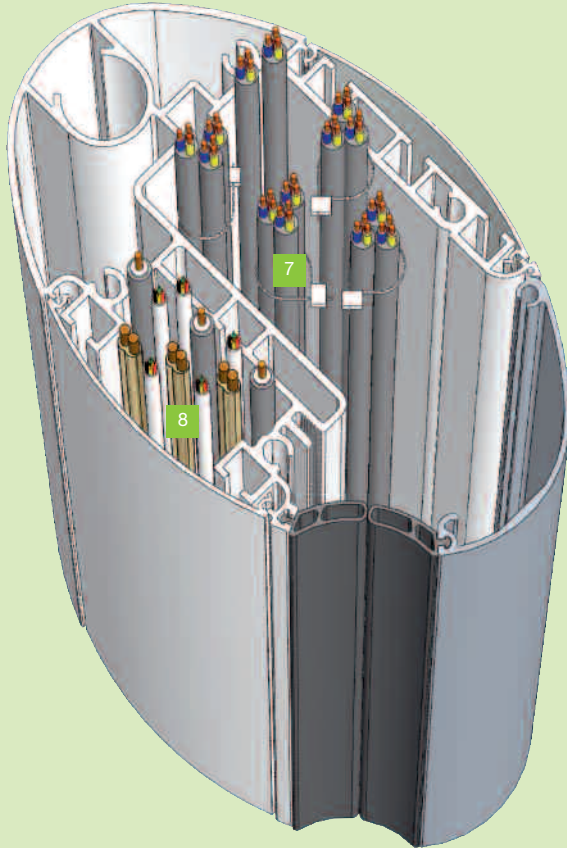


Direct cabling from unit to socket strip and to data line shaft

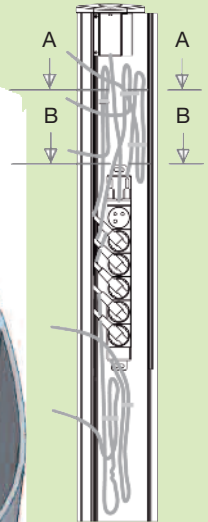
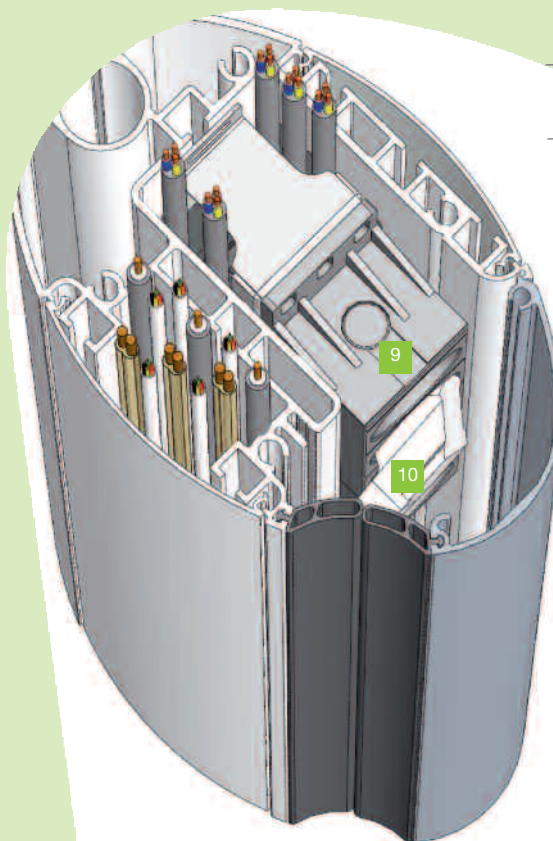


Rubber lip permits cable entry and exit at any point along the support column

Section A – A



Section B – B



pro-cart support column with fittings



Integrated, hygienic covered, central on/off switch in the cap and latch mechanism on the cover extrusion

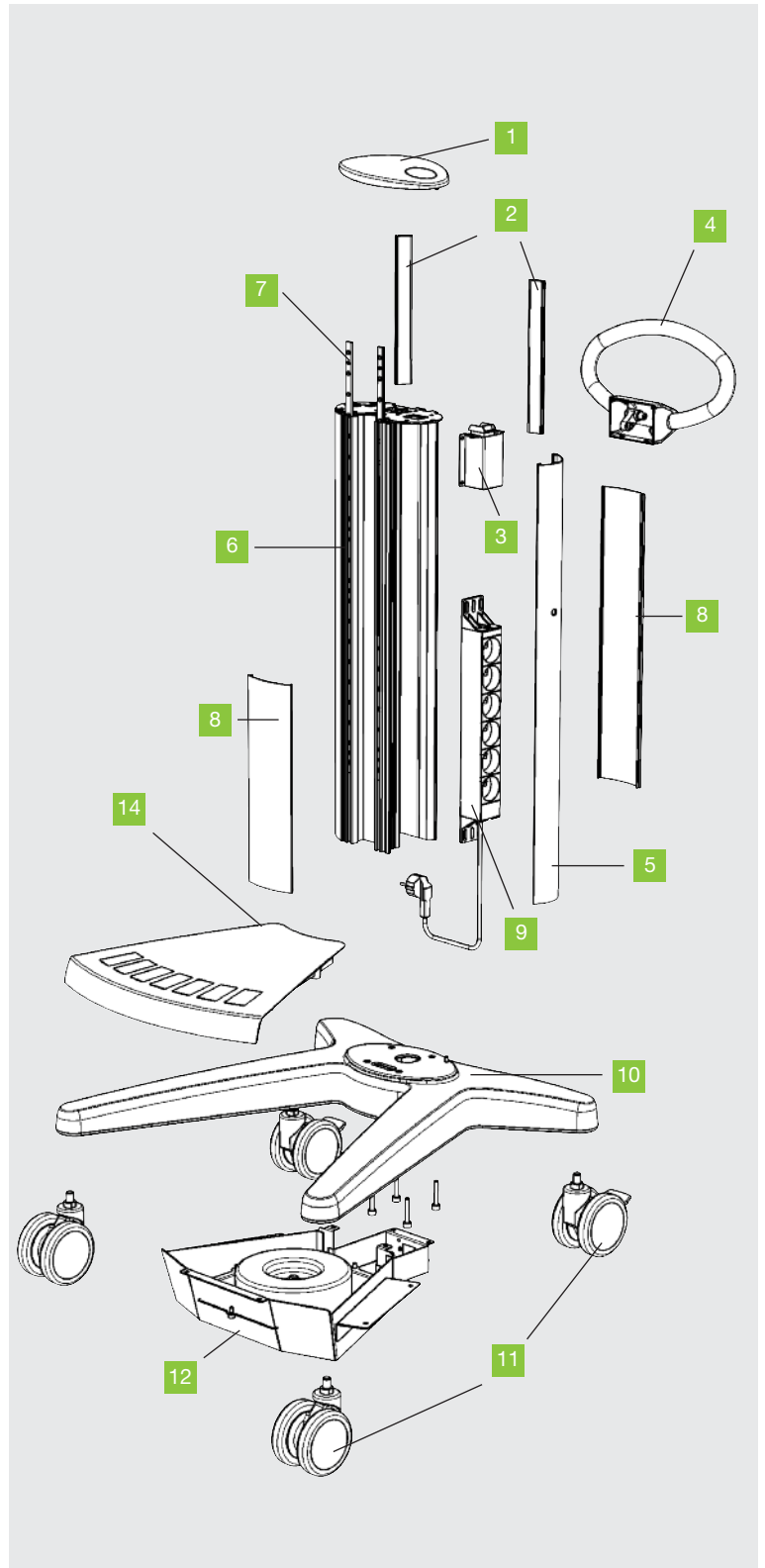


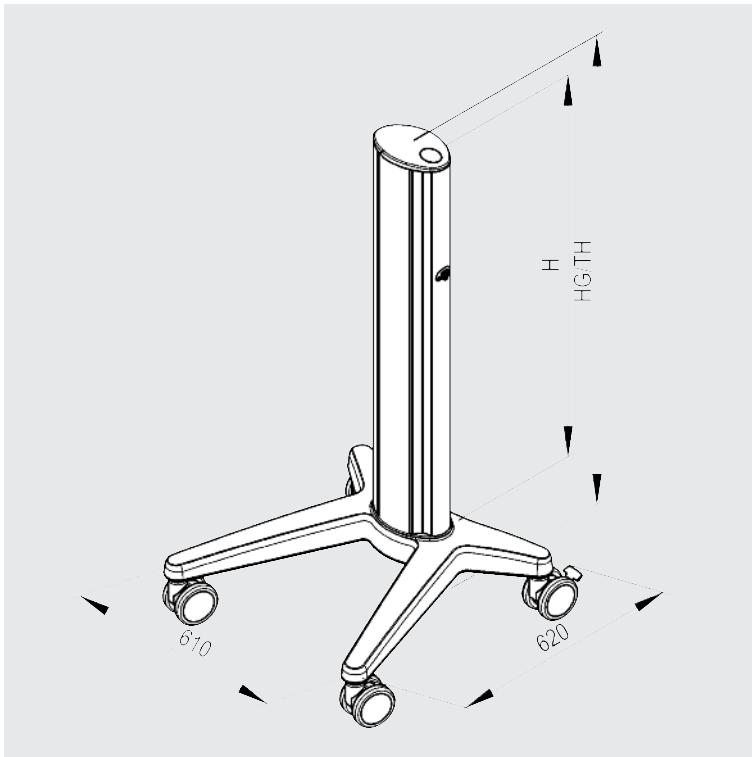
Use of different plugs and integration of country-specific socket strips

- 7 Residual cable volumes
- 8 Power cables and data lines
- 9 Socket strip
- 10 Plug with outgoing cable

Decorative elements and dimensions

- 1 Cap, optionally with transparent cover for operating the central on/off switch, made of ABS, RAL 7043 traffic grey B
- 2 Cover strips made of EPDM, RAL 7043 Traffic Grey B
- 3 On/off switch with switch cover
- 4 Sliding handle, sheet steel/aluminium
- 5 Cover extrusion made of extruded aluminium, RAL 7035 Light Grey powder-coated
- 6 Vertical extrusion made of extruded aluminium, RAL 7035 Light Grey powder-coated
- 7 Tapped strip for mounting all system modules, M6 tapped holes in increments of 32 mm
- 8 Cover strip made of plastic for closing the cavity of the support column between the system modules, RAL 7035 Light Grey
- 9 Socket strip for assembly in the vertical extrusion
- 10 Base made of cast aluminium, RAL 7035 Light Grey powder-coated
- 11 Twin swivel castors Ø 100 mm, two with wheel lock, optionally in conductive version Ø 100 mm or Ø 125 mm
- 12 Isolating transformer 660 VA or 1200 VA with electronic inrush current limitation
- 13 Base trim made of ABS, RAL 7043 Traffic Grey B
- 14





The basic frame comprises:

- 1 base
- 4 twin swivel castors Ø 100 mm, two with wheel locks
- 1 vertical support column, with 2 tapped strips and swivel cover extrusion with latch, cover strips
- 1 cap

Installation height	Length of column = H	TH for Castors Ø 100 mm	TH for Castors Ø 125 mm
21 U ¹⁾	672 mm	884 mm	909 mm
30 U ¹⁾	960 mm	1172 mm	1197 mm

Load capacity

- Basic frame total load 80 kg / 176 lbs
- Shelf 20 kg / 44 lbs
- Block of drawers
 - Shelf 15 kg / 33 lbs
 - Drawer 3 kg / 6,6 lbs

Setup

- Base
- 4 twin swivel castors Ø 100 mm, two with wheel locks (optionally in conductive version Ø 100 mm or Ø 125 mm)
- 1 support column with 2 tapped strips (32 mm increments) over the entire installation height
- Comprehensive system components and accessories for different applications
- Delivery fully assembled

¹⁾ 1 U = 32 mm

The modular system for individual solutions

pro-cart

Use the modular system to put together your individual **pro-cart**. Contact us for any support you require.

Your **pro-cart** will be delivered to you fully assembled and packed within the space of a few days.

Here is a small selection of system components and accessories. You will find a comprehensive description and ordering information on all components suitable for pro-cart in the accessories section from Page 14. An overview of other compatible accessories is provided on page 24.



pro-cart colour scheme to match the corporate identity of our customers



Continuous modular setup in 32 / 64 mm increments for all product lines



pro-cart is also compatible with our range of accessories and system component range



Monitor holder VESA 75 / VESA 100



Infusion stand



Compact support system fitting with low installation height for the individual system components

Order configurations



pro-cart equipment cart, 21 U¹⁾

Order number: PT.5000.XXX ²⁾

Basic frame 21 U¹⁾ fitted with:

- 4 twin swivel castors Ø 100 mm, 2 with wheel locks
- 1 shelf with handle, W 450 mm, D 360 mm³⁾
- 1 shelf W 450 mm, D 360 mm³⁾

Load capacity: 80 kg / 176 lbs

Finish:

- RAL 7035 Light Grey powder-coated
- Decorative element **handle** see optionally ²⁾

pro-cart equipment cart, 21 U¹⁾

Order number: PT.5001.XXX ²⁾

Basic frame 21 U¹⁾ fitted with:

- 4 twin swivel castors Ø 100 mm, 2 with wheel locks
- 1 block of drawers, W 450 mm, D 360 mm³⁾
- 1 shelf, W 450 mm, D 360 mm³⁾
- 1 push handle
- 1 gel bottle holder right

Load capacity: 80 kg / 176 lbs

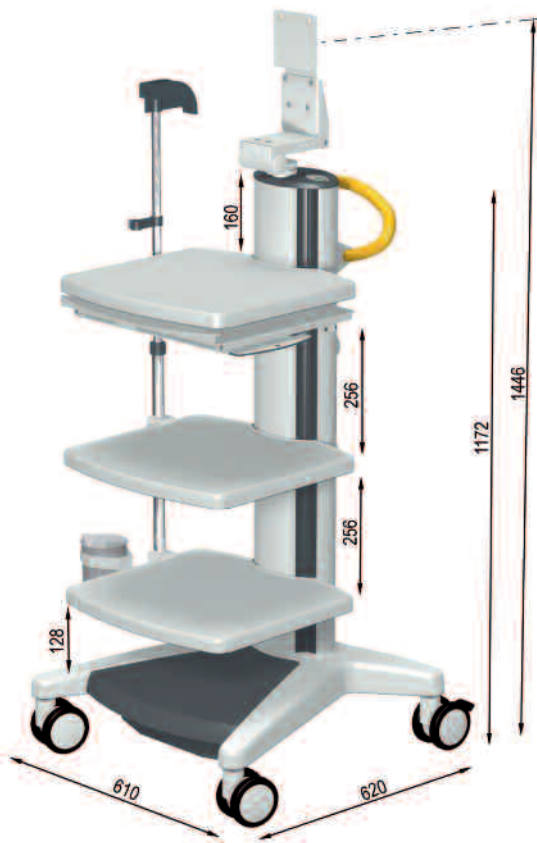
Finish:

- RAL 7035 Light Grey powder-coated
- Decorative element **handles** see optionally ²⁾

1) 1 U = 32 mm

2) **Decorative colour:** Make sure you replace .XXX with .003 = RAL 7035 Light Grey, .008 = RAL 5015 Sky Blue, .009 = RAL 1003 Signal Yellow!

3) = useful installation depth at 450 mm width



pro-cart video cart, 30 U¹⁾ with isolating transformer

Order number: VT.4300.XXX ²⁾

Basic frame 30 U¹⁾ fitted with:

- 4 twin swivel castors Ø 100 mm, conductive
2 with wheel locks
- 3 shelves, W 450 mm, D 360 mm³⁾
- 1 keyboard drawer with mousepad
W 450 mm, pull-out length 260 mm
- 1 monitor holder for VESA 75 / VESA 100 to 14 kg,
swivel and tilt
- 1 endoscope holder with clamp
- 1 drain glass
- 1 isolating transformer 1200 VA
- 1 central on/off switch
- 1 socket strip 6-way IEC 320
with 7 equipotential bonding connectors
- 1 cable winder
- 1 push handle

Load capacity: 80 kg / 176 lbs

Finish:

- RAL 7035 Light Grey powder-coated
- Decorative element handle see optionally ²⁾

pro-cart video cart, 30 E¹⁾ with isolating transformer

Order number: VT.4301.XXX ²⁾

Basic frame 30 U¹⁾ fitted with:

- 4 twin swivel castors Ø 100 mm, conductive
2 with wheel locks
- 1 shelf with handle, W 450 mm, D 360 mm³⁾
- 1 keyboard drawer with mousepad
W 450 mm, pull-out length 260 mm
- 1 shelf, W 450 mm, D 360 mm³⁾
- 1 block of drawers, W 450 mm, D 360 mm³⁾
- 1 monitor holder for VESA 75 / VESA 100 to 14 kg,
swivel and tilt
- 1 isolating transformer 1200 VA
- 1 central on/off switch
- 1 socket strip 6-way IEC 320
with 7 equipotential bonding connectors
- 1 cable winder
- 1 push handle

Load capacity: 80 kg / 176 lbs

Finish:

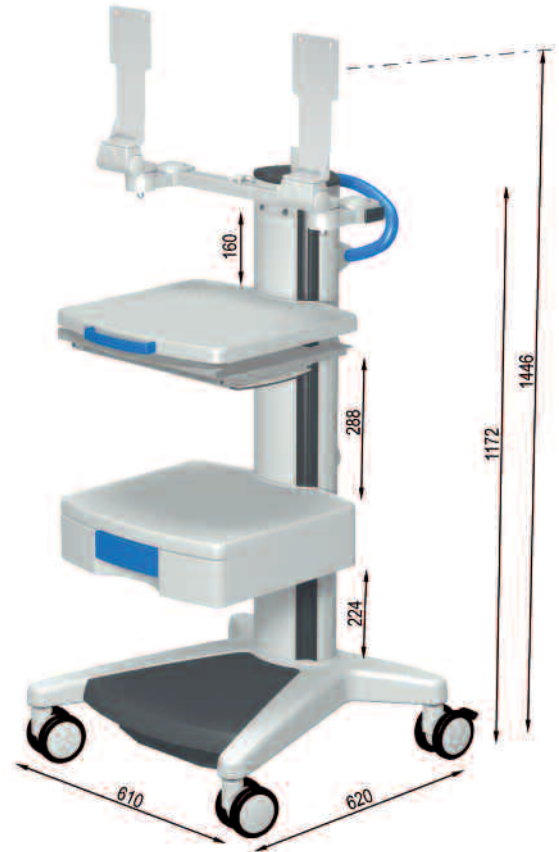
- RAL 7035 Light Grey powder-coated
- Decorative element handle see optionally ²⁾

1) 1 U = 32 mm

2) Decorative colour: Make sure you replace .XXX with .003 = RAL 7035 Light Grey, .008 = RAL 5015 Sky Blue, .009 = RAL 1003 Signal Yellow!

3) = useful installation depth at 450 mm width

Order configurations



pro-cart PC cart, 30 U¹⁾

Order number: PT.5004.XXX²⁾

Basic frame 30 U¹⁾ fitted with:

- 4 twin swivel castors Ø 100 mm, 2 with wheel locks
- 1 shelf with handle, W 450 mm, D 360 mm³⁾
- 1 keyboard drawer with mousepad W 450 mm, pull-out length 260 mm
- 1 block of drawers with handle, W 450 mm, D 360 mm³⁾
- 1 monitor holder VESA 75 / VESA 100 for monitors to 8 kg, swivel and tilt
- 1 cable winder
- 1 push handle

Load capacity: 80 kg / 176 lbs

Finish:

- RAL 7035 Light Grey powder-coated
- Decorative element handles see optionally²⁾

pro-cart PC cart, 30 U¹⁾ with isolating transformer

Order number: VT.4302.XXX²⁾

Basic frame 30 U¹⁾ fitted with:

- 4 twin swivel castors Ø 100 mm, conductive 2 with wheel locks
- 1 shelf with handle, W 450 mm, D 360 mm³⁾
- 1 keyboard drawer with mousepad W 450 mm, pull-out length 260 mm
- 1 block of drawers, W 450 mm, D 360 mm³⁾
- 1 Twin monitor holder VESA 75 / VESA 100 for monitors to 8 kg, tilt and swivel
- 1 isolating transformer 660 VA
- 1 central on/off switch
- 1 cable winder
- 1 socket strip 4-way IEC 320 with 5 equipotential bonding connectors
- 1 push handle

Load capacity: 80 kg / 176 lbs

Finish:

- RAL 7035 Light Grey powder-coated
- Decorative element handles see optionally²⁾

1) 1 U = 32 mm

2) Decorative colour: Make sure you replace .XXX with .003 = RAL 7035 Light Grey, .008 = RAL 5015 Sky Blue, .009 = RAL 1003 Signal Yellow!

3) = useful installation depth at 450 mm width



pro-cart ECG cart, 30 U¹⁾

Order number: PT.5006.XXX²⁾

Basic frame 30 U¹⁾ fitted with:

- 4 twin swivel castors Ø 100 mm, 2 with wheel locks
- 2 shelves, W 450 mm, D 360 mm³⁾
- 1 keyboard drawer with mousepad W 450 mm, pull-out length 260 mm
- 1 swivel and tilt unit with monitor holder VESA 75 / VESA 100 for monitors to 8 kg
- 1 cable winder
- 1 push handle
- 1 holder for suction system Strässle DT 100
More holders for suction systems see page 20.

Load capacity: 80 kg / 176 lbs

Finish:

- RAL 7035 Light Grey powder-coated
- Decorative element handle see optionally²⁾

pro-cart Laptop cart, 30 U¹⁾

Order number: PT.5007.XXX²⁾

Basic frame 30 U¹⁾ fitted with:

- 4 twin swivel castors Ø 100 mm, 2 with wheel locks
- 1 laptop holder, for all standard laptops
- 1 block of drawers, with handle W 450 mm, D 360 mm³⁾
- 1 push handle

Load capacity: 80 kg / 176 lbs

Finish:

- RAL 7035 Light Grey powder-coated
- Decorative element handles see optionally²⁾

1) 1 U = 32 mm

2) Decorative colour: Make sure you replace .XXX with .003 = RAL 7035 Light Grey, .008 = RAL 5015 Sky Blue, .009 = RAL 1003 Signal Yellow!

3) = useful installation depth at 450 mm width

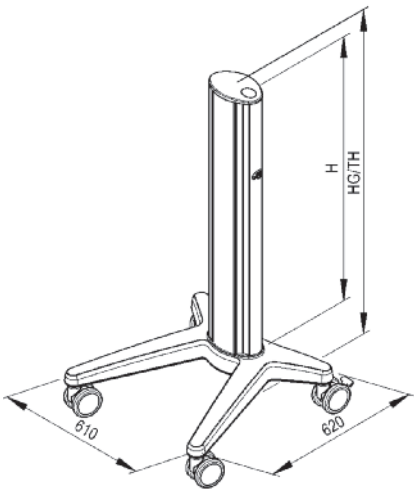
System components

Basic frame **pro-cart**



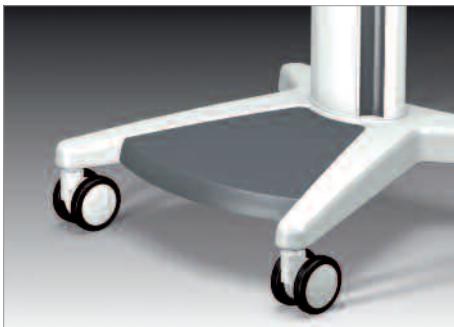
The basic frame **pro-cart** can be supplied in the heights 21 U¹⁾ and 30 U¹⁾. The innovative support column offers a wide range of options for safe power supply and effective cable management. The basic frame has high torsional strength and a superior level of tilt stability.

- Load capacity:** 80 kg / 176 lbs
Finish: Base, support column: RAL 7035 Light Grey powder-coated
 Cap, cover strips: RAL 7043 Traffic Grey B
Scope of delivery: ■ 1 base
 ■ 4 twin swivel castors Ø 100 mm, 2 with wheel locks
 ■ 1 support column with 2 continuous tapped strips
How supplied: fully assembled



Basic frame pro-cart	Installation height H	Total height HG	Order number
	21 U ¹⁾	884 mm	PT.4000.091
	30 U ¹⁾	1172 mm	PT.4001.091

Base trim

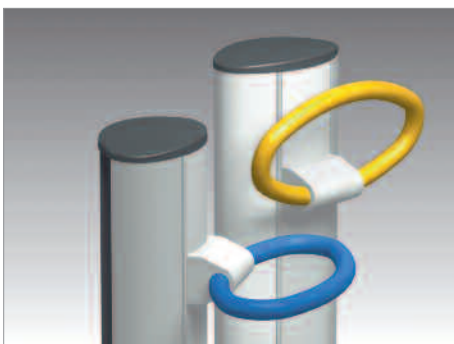


Decorative element - streamlined trim between the stabilizers fitted to the base

- Load capacity:** 5 kg / 11 lbs
Finish: RAL 7043 Traffic Grey B, Material ABS
Scope of delivery: 1 base trim, supplied with mounting hardware

	Order number
Base trim	PT.2001.100

Push handle



The push handle for fitting to the rear of the column provides two positions – push position 90°-angle for adequate freedom of movement for legs – space-saving park position 15° angle

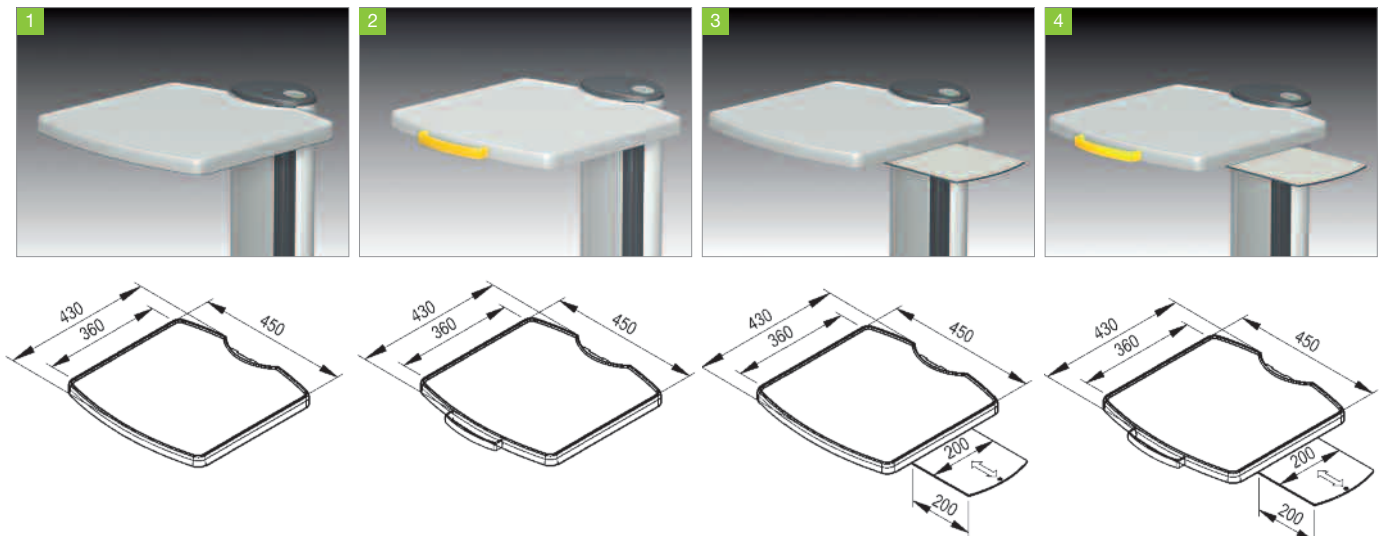
- Finish:** Mounting RAL 7035 Light Grey, push handle powder-coated, see decorative colour ²⁾
Scope of delivery: 1 push handle, supplied with mounting hardware

	Order number
Push handle	PT.2000.XXX

1) 1 U = 32 mm

2) Decorative colour: Make sure you replace .XXX with .003 = RAL 7035 Light Grey, .008 = RAL 5015 Sky Blue, .009 = RAL 1003 Signal Yellow!

Shelves



The shelves in the pro-cart product line have the following features:

- A continuous raised edge offers your valuable equipment a secure platform and allows accessories to be accommodated (using clamps, see Page 24).
- Rounded edges protect users from injury.
- The low installation height of only 32 mm (1 U) saves installation space and permits compact accommodation of equipment.
- The powder-coated impact and scratch-resistant finish is easy to clean and resistant to cleaning agents and disinfectants.
- Fast wipe-clear with smooth finish
- The mousepad can be pulled out on right / left

pro-cart pro-cart shelves are supplied in the following versions:

- 1 Shelf
- 2 Shelf with handle
- 3 Shelf with mousepad
- 4 Shelf with handle and mousepad

Assembly: In the front T-slots of the support column
Platform area: 450 mm x 360 mm (W x D)
Load capacity: 20 kg / 44 lbs
Finish: RAL 7035 Light Grey, handle see decorative colour 2)
Scope of delivery: 1 shelf, preassembled, supplied with mounting hardware

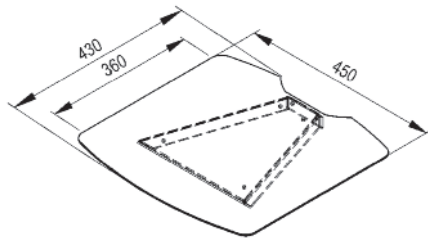
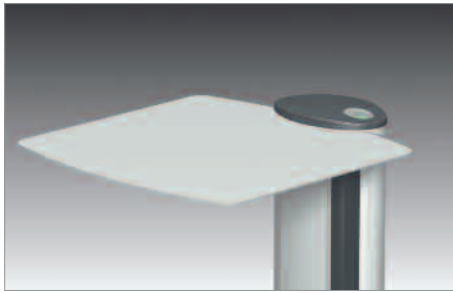
Shelf	Installation height	Order number
1 Shelf	1 U 1)	PT4100.091
2 Shelf with handle	1 U 1)	PT4101.XXX
3 Shelf with mousepad	1 U 1)	PT4102.091
4 Shelf with handle and mousepad	1 U 1)	PT4103.XXX

1) 1 U = 32 mm

2) Decorative colour: Make sure you replace .XXX with .003 = RAL 7035 Light Grey, .008 = RAL 5015 Sky Blue, .009 = RAL 1003 Signal Yellow!

System components

Universal shelf

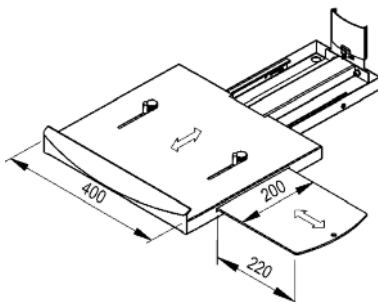
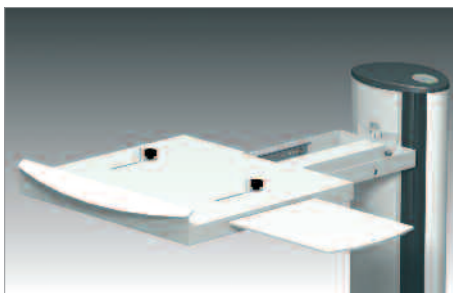


On request, this shelf is matched the contour of the equipment to be accommodated in conformity with customer specifications.

Load capacity: 10 kg / 22 lbs
Material: Universal shelf aluminium
 Bracket steel
Finish: RAL 7035 Light Grey powder-coated
Scope of delivery: 1 universal shelf with bracket, preassembled, supplied with mounting hardware

	Installation height	Order number
Universal shelf	1 U ¹⁾	PT.4111.091

Keyboard shelf

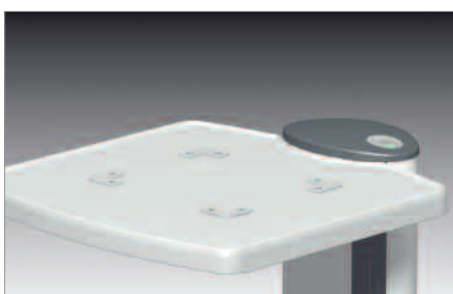


The keyboard shelf to accommodate keyboards up to 200 mm in depth has a low installation height of only 3 U¹⁾. Two adjustable bars prevent the keyboard from sliding about. This means the keyboard is therefore stowed safely in any situation. The pull-out length is 260 mm and permits ergonomic operation. The cables are routed securely and protected against damage when the keyboard is moved in and out.

Load capacity: 3 kg / 6,6 lbs
Finish: RAL 7035 Light Grey
Scope of delivery: 1 keyboard drawer, preassembled, supplied with mounting hardware
Recommendation: To obtain best functionality and a perfect, technical appearance, we recommend to order an additional shelf (see page 15) as covering for the keyboard shelf.

	Installation height	Order number
Keyboard shelf	3 U ¹⁾	PT.4108.091

Equipment fixing



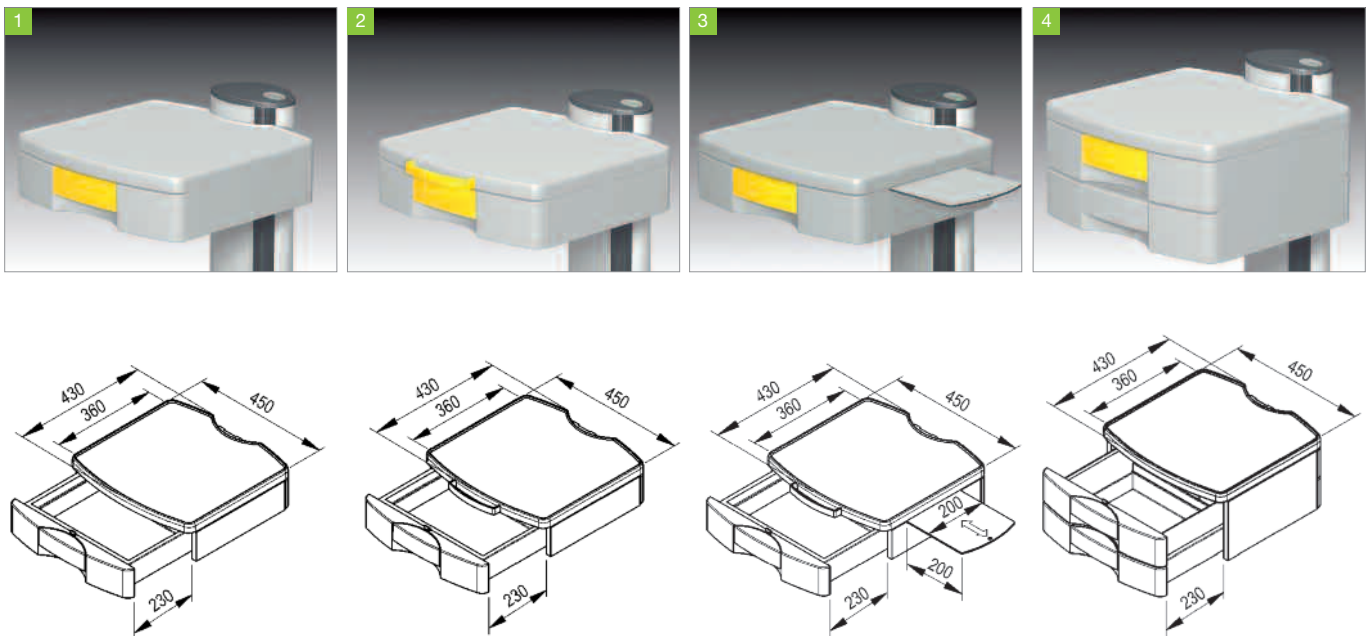
Secures the equipment placed on the platform to prevent sliding. For mounting on the shelf or block of drawers. The particularly flat fixing corners (height 3 mm) even fit under equipment with flat feet, e.g. printers. They are self-adhesive, but can also be screwed in place.

Finish: RAL 7035 Light Grey
Scope of delivery: 4 fixing corners, supplied with mounting hardware

	Order number
Equipment fixing	FC 0221.1

¹⁾ 1 U = 32 mm

Block of drawers



The block of drawers in the **pro-cart** product line is fitted with a latch mechanism that can be operated by one hand. This ensures that the drawers cannot open inadvertently when the cart is pushed over a threshold.

The **pro-cart** block of drawers is supplied in the following versions:

- 1 Block of drawers without handle on shelf
- 2 Block of drawers, with handle on shelf
- 3 Block of drawers with mousepad (pull-out right / left), with and without handle on shelf
- 4 Block of drawers high, 1 unit, with and without handle on shelf

Interior area: 340 mm x 240 mm x 80 mm (W x D x H)
340 mm x 240 mm x 175 mm (W x D x H), **drawer high**

Load capacity: Shelf: 15 kg / 33 lbs distributed load
Drawer: 3 kg / 6,6 lbs distributed load

Finish: RAL 7035 Light Grey, decorative colour drawer handle/handle on shelf see 2)

Scope of delivery: 1 block of drawers preassembled, supplied with mounting hardware

Block of drawers		Installation height	Order number
1 2	Block of drawers		
		1 without handle on shelf	4 U1) PT.4104.XXX
		2 with handle on shelf	4 U1) PT.4105.XXX
3	Block of drawers with mousepad	without handle on shelf	4 U1) PT.4106.XXX
		with handle on shelf	4 U1) PT.4107.XXX
4	Block of drawers high, 1 unit	without handle on shelf	7 U1) PT.4113.XXX
		with handle on shelf	7 U1) PT.4114.XXX

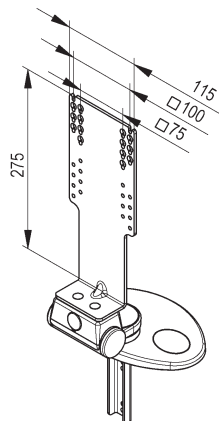
1) 1 U = 32 mm

2) Decorative colour: Make sure you replace .XXX with .003 = RAL 7035 Light Grey, .008 = RAL 5015 Sky Blue, .009 = RAL 1003 Signal Yellow!

3) = useful installation depth at 450 mm width

System components

Monitor holder for flat screen with VESA 75 / VESA 100, swivel and tilt – to 8 kg



The monitor bracket is designed for monitors 17"/19" with VESA 75 & VESA 100 to maximum 8 kg.

The depth of the monitor should not exceed a depth of max. 70 mm.

The swivel and tilt unit tilts in the range from $\pm 15^\circ$ and swivels through 316° . The adjustment force can be varied.

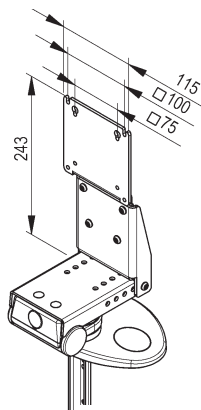
Assembly: Directly in the front duct of the support column
Load capacity: to 8 kg / 22 lbs
Finish: RAL 7035 Light Grey
Scope of delivery: 1 monitor bracket
 1 swivel and tilt unit, supplied with mounting hardware and cap

Order number

Monitor holder for flat screen with VESA 75 / VESA 100 – to 8 kg

PT.4118.091

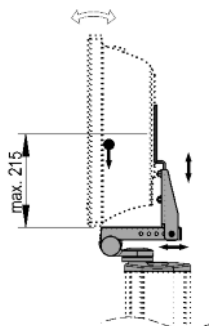
Monitor holder for flat screen with VESA 75 / VESA 100, swivel and tilt – to 14 kg



Universal monitor bracket for mounting monitors with VESA 75 / VESA 100 adaptor to 14 kg. The depth and height of the 3-part bracket can be adjusted to match different monitor sizes.

The swivel and tilt unit tilts in the range from $\pm 15^\circ$ and swivels through 316° . The adjustment force can be varied.

Assembly: Directly in the front duct of the support column
Load capacity: to 14 kg / 31 lbs
Finish: RAL 7035 Light Grey
Scope of delivery: 1 monitor bracket
 1 swivel and tilt unit, supplied with mounting hardware and cap

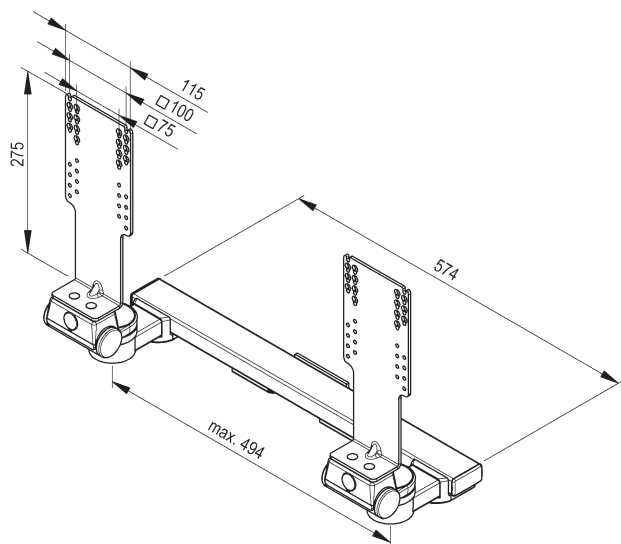
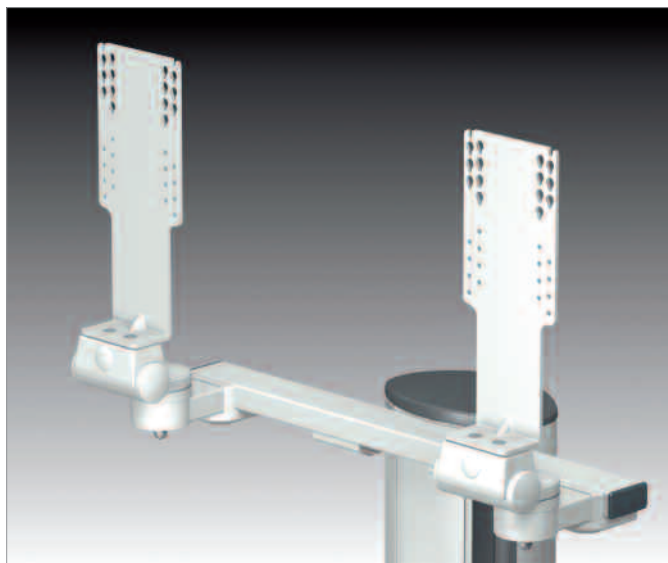


Order number

Monitor holder for flat screen with VESA 75 / VESA 100 – to 14 kg

PT.4119.091

Twin monitor holder for flat screen with VESA 75 / VESA 100, swivel and tilt



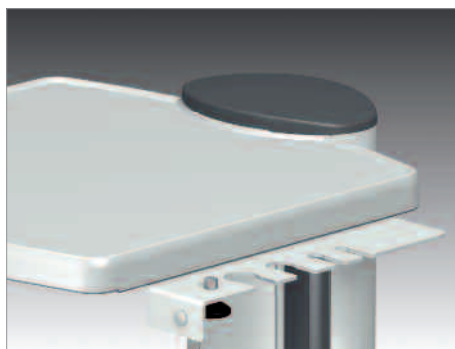
Twin monitor holder for flat screens with VESA 75 / VESA 100 adapter.

The swivel and tilt unit tilts in the range $\pm 15^\circ$ and swivels through 316° . The adjustment force can be varied.

- Assembly:** In the two front T-slots of the support column
- Load capacity:** for each swivel and tilt unit to 8 kg / 22 lbs or to 14 kg / 31 lbs
- Finish:** RAL 7035 Light Grey
- Scope of delivery:** 1 stabilizer with 2 swivel and tilt units, 2 monitor brackets supplied with mounting hardware

	Order number
Twin monitor holder for flat screen with VESA 75 / VESA 100 – to 8 kg	PT.4116.091
Twin monitor holder for flat screen with VESA 75 / VESA 100 – to 14 kg	PT.4117.091

Camera holder with mounting



For mounting camera heads and fibre-optic cables with varying diameters on the shelf

- Assembly:** on the shelf
- Finish:** camera holder: Polyamide black
mounting: RAL 7035 light grey

Scope of delivery: 1 camera holder, with mounting hardware

	Order number
Camera holder with mounting	PT.2028.991

Accessories

Infusion stand

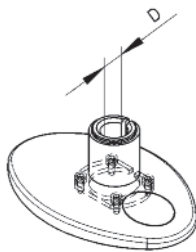
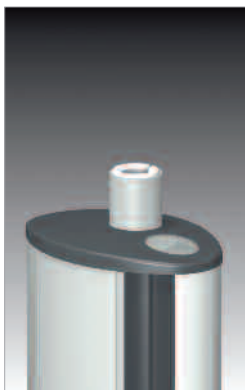


Infusion stand with one-hand adjustment and 4-arm safety bottle holder
The height-adjustment range is 870 mm (full length of the bar).

Assembly: In the support column
Finish: Bright, chrome-plated
Scope of delivery: 1 infusion stand, supplied with mounting hardware and cap

	Order number
Infusion stand	PT.2006.100

Holder for suction systems



Mounting for suction systems

Finish: RAL 7035 Light Grey
Scope of delivery: 1 holder according to make, supplied with mounting hardware und cap

Holder for suction systems	D	Order number
Strässle / Ergoline	Ø 25,5 mm	PT.2009.091
Hellige / KISS	Ø 30,0 mm	PT.2010.091
Ohlenschläger	Ø 27,5 mm	PT.2011.091

Bottle holder

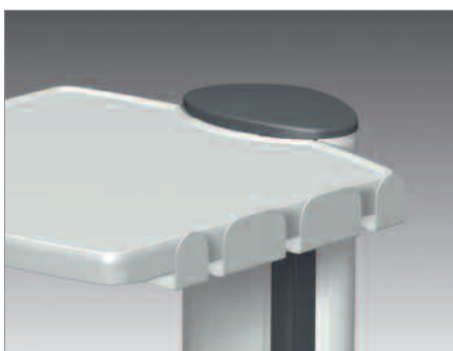


For holding a rinsing bottle

Assembly: Factory-assembled, on the shelf or block of drawers
Load capacity: 5 kg / 11 lbs
Material: Sheet steel, zinc coated
Scope of delivery: 1 bottle holder, supplied with mounting hardware

	Order number
Bottle holder	PT.2007.100

Holder for transducer



For mounting transducers

Assembly: Factory-assembled, on the shelf or block of drawers
Finish: RAL 7035 Light Grey
Scope of delivery: 1 holder, supplied with mounting hardware

	Order number
Holder for transducer	PT.2005.091

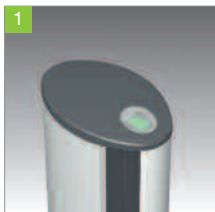
Socket strips



- 1** Socket strip with central ON/OFF switch in the cap of the support column gives easy operation of the equipment connected to the socket strip. The switch at the top of the support column can be easily reached and the cover provides protection against inadvertent operation of equipment. It is also easy to clean. Power is supplied through a EURO IEC 320 input

Assembly: Only at the factory!

Scope of delivery: 1 socket strip
1 central ON/OFF switch



- 2** Socket strip with connecting cable (5 m)

Assembly: in the support column

Scope of delivery: 1 socket strip, supplied with mounting hardware

Please note: The scope of delivery of Euro socket strip ZV 9433.9 does not include a connecting cable. Please order the country-specific connecting cable separately.

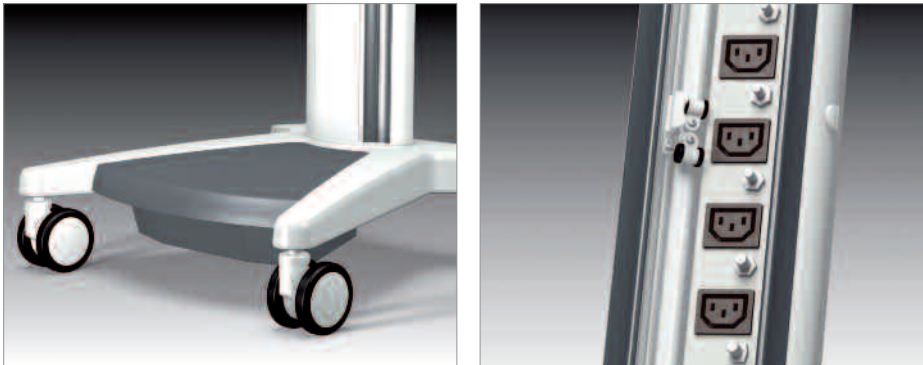
Socket strips	Rated value	Order number	
		1 with central ON/OFF switch	2 with connecting cable
EURO socket strip, 6-way	10 A / 250 VAC	ZV 9432.9	ZV 9433.9
Earthed socket strip, 6-way	16 A / 250 VAC	ZV 9434.9	ZV 9435.9
British standard, 6-way	16 A / 250 VAC	ZV 9436.9	ZV 9437.9
Swiss standard, 7-way	10 A / 250 VAC	ZV 9438.9	ZV 9439.9
French standard, 6-way	16 A / 250 VAC	ZV 9440.9	ZV 9441.9
Italian standard, 6-way	10 A / 250 VAC	ZV 9442.9	ZV 9443.9
USA Hospital Grade Standard, 6-way	15 A / 120 VAC	–	On demand

Country-specific connecting cables suitable for **1** and ZV 9433.9

Connecting cable for EURO IEC 320 input	Length	Rated value	Order number
Earthed	5 m	10 A / 250 VAC	ZV 9861.9
British standard	5 m	10 A / 250 VAC	ZV 9860.9
Swiss standard	5 m	10 A / 250 VAC	ZV 9798.9
French standard	5 m	10 A / 250 VAC	ZV 9861.9
Italian standard	5 m	10 A / 250 VAC	ZV 9448.9

Isolating transformer

Isolating transformer



Isolating transformers are used to reduce the maximum discharge current to values in conformity with rated current.

If several units are being used on one equipment cart, the individual devices are frequently supplied with electricity via one multiple socket strip mounted on the cart. The earth-leakage currents from this equipment can add up to a value that is significantly above the permissible limit of 0.5 mA. Since the earth-leakage currents can also occur during defective operation, the isolating transformer prevents these currents discharging to earth through the patients or the medical staff/ theatre personnel. This guarantees maximum safety for levels for all those people involved.

The isolating transformers for **pro-cart** can also be fitted with an ELG insulation monitor. This can be connected with simply Plug and Play technology. Only one slot on the EUR socket strip is required. This is a visual/ acoustic signal that alerts users to falling insulation resistance of the entire system, in the critical range, via an LED display. An acoustic alert is also given if there is a hazard. It is also possible to check the overall status of the system before every investigation or operation. However, this does not replace the test/ maintenance intervals laid down for individual units.

Isolating transformer for **pro-cart**

■ Power:	660 VA / 1200 VA
■ Input/output voltage:	115 V / 115 V or 230 V / 230 V, 50 Hz / 60 Hz - reversible
■ Power input:	IEC 320 EURO input for use of country-specific power cables
■ Design:	Annular core in conformity with IEC 601-1 / EN 60601-1, CE marking
■ Inrush current limitation:	electronically controlled, to approx. 15 A
■ Safety class:	1
■ Insulation voltage:	4 KV
■ Fuse protection:	primary: 2-phase secondary: 1-phase at socket strip

Scope of delivery: 1 isolating transformer with base trim

1 central ON/OFF switch at the top of the support column

1 power cable earthed 5 m

1 EURO socket strip 4-way/6-way IEC 320 with fuse and equipotential bonding plugs for each slot

Assembly: Only at the factory.

Isolating transformer	Order number
660 VA with 4-way EURO socket strip	ZV 9446.9
1200 VA with 6-way EURO socket strip	ZV 9447.9

Insulation monitor ELG



Easy connection to the isolating transformer via a slot on the multiple socket strip IEC 320

- Supply voltage: 230 V / AC ±15 %
- Operate value: 53 kOhm
- Test resistance: 33 kOhm
- Alternating current internal resistance: 220 kOhm
- Direct current internal resistance: 320 kOhm
- Maximum measured voltage: 12 V
- Maximum measured current: < 0.5 mA
- Maximum permissible external direct voltage: 250 V DC

Assembly: In the front T-slots of the support column

Scope of delivery: 1 insulation monitor ELG
1 cover strip
supplied with mounting hardware

115 V Version on request.

	Installation height	Order number
Insulation monitor ELG	7 E1)	PT.2008.091

Cable winder



The cable winder accommodates maximum 5 m cable.

Assembly: On the rear of the support column

Material: Plastic

Oberfläche; RAL 7035 Light Grey

Scope of delivery: 2 cable winders
cover strip
supplied with mounting hardware

	Installation height	Order number
Cable winder	19 E1)	PT.2004.091

1) 1 U = 32 mm

Overview of system components & accessories

Castor conversion kit	Ø 100 mm conductive, instead of Ø 100 mm	ZV 9428.9
	Ø 125 mm conductive, instead of Ø 100 mm	ZV 9429.9
Gel bottle holder	single	GW 0800.1
	double	RS 0133.1
Camera holder	with clamp	GW 9983.1
Cable holder	for secure and streamlined accommodation of e.g. fibre-optic guide	GW 9807.1
Gas bottle holder	for Gas bottles with max. 2 l content, for all support systems	GW 0466.1
	for Gas bottles with max. Ø 145 mm and 3 l / 5 l / 10 l	GW 0160.1
Basket	assembly on front and rear T-slots of the support column	ZV 9967.9
Endoscope holder single	for assembly on 2 shelves , with 2 standard runners,	GW 0394.9
Standard runner	length 162 mm	RS 0132.1
	length 390 mm	RS 0076.1
Clamp	for shelf, Mounting Diameter 16 mm	ZV 9878.9
	for shelf, Mounting Diameter 18 mm	ZV 9879.9
	for standard runner, Mounting Diameter 16 mm	ZV 9876.9
	for standard runner, Mounting Diameter 18 mm	ZV 9877.9
Adapter piece	for mounting add-ons with pin diameter D 16 mm	PT.2024.091
	for mounting add-ons with pin diameter D 18 mm	PT.2025.091
Computer holder		TS 6146.1
Equipotential bonding cable	length 0,3 m	ZV 9941.9
	length 0,5 m	ZV 9942.9
	length 0,8 m	ZV 9994.9
	length 1,0 m	ZV 9943.9
	length 5,0 m	ZV 9944.9

Comprehensive technical descriptions and the associated ordering information on the articles referred to in the above table are provided in the section on **System Components and Accessories** in our Main Catalogue **Mobile Equipment Carts**.

Foreign Regional Offices

Belgium

Belintra n.v.
Aalbroekstraat 3
9890 Semmerzake (Gavere)
Tel.: +32-9-243 10 13
Fax: +32-9-243 10 19
e-mail: info@belintra.be
www.belintra.be

China

VACT Vinck's Agency
for Consulting and Trading
309, Dongfang Building
9, Yuan Dong Road RC
210044 Nanjing
Tel.: +86 25-7051395
Fax: +86 25-7051395
e-mail: vact.e@t-online.de
www.vact-consulting.de

Great Britain

OR Networks Limited1, 2 Unit
Hillcrest Park, Hoyle Road
NG14 6QJ Nottinghamshire
Calverton
Tel.: +44-115-965-5577
Fax: +44-115-965-5522
e-mail: s.jeffs@or-tv.net
www.or-tv.net

Italy

N.O.R.I.S. SRL
Piazza Alpini d'Italia
43010 Ponte Taro (Parma)
Tel.: +39-0521-656915
Fax: +39-0521-616071
e-mail: noris@noris-mdn.com
www.noris-mdn.com

Japan

CEC Chuo Electronics Co. Ltd.
Daiichi-Seimei Bldg. 7F
3-20-6 Myojin-cho,
Hachioji-shi
J-192-0046 Tokyo
Tel.: +81-426-56-5911
Fax: +81-426-56-5808
e-mail: tsuchiya@cec.co.jp
www.cec.co.jp

Netherlands

Alphatron Medical Systems BV
Schaardijk 23
NL-3001 NH Rotterdam-Haven
Tel.: +31-10-453 4000
Fax: +31-10-453 4001
e-mail: info@alphatronmedical.com
www.alphatronmedical.com

STATIONARY CARRIER SYSTEMS MOBILE EQUIPMENT CARTS

It's all there

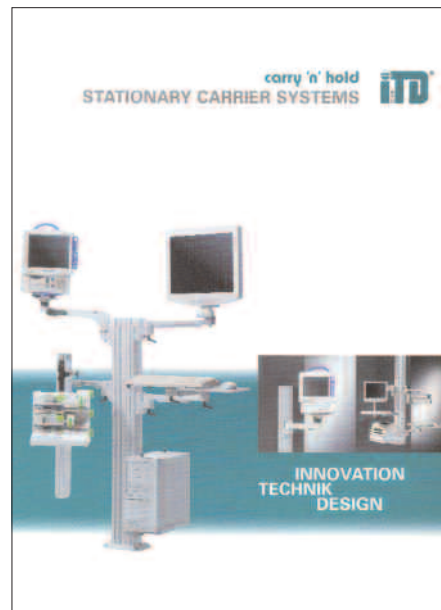
This CD provides you with information on our stationary support systems and mobile equipment carts. The CD also presents our complete range of accessories. It gives you access to our helpful Configurator. This will help you put together your ITD support system and try out different configurations.

If you don't already have a copy of our CD, we will send you a CD on request:

... or ask for one of our catalogues

You will find comprehensive information on all our product lines in one of our specialist catalogues. You can order a catalogue from the address below:

ITD GmbH
Tel. +49-89-61 44 25-0
Fax +49-89-61 44 25-20
e-mail: sales@itd-cart.com



carry 'n' hold
STATIONARY CARRIER SYSTEMS



work 'n' roll
MOBILE EQUIPMENT CARTS

Türkey
Üces A.S.
Eski Büyükdere Cad. No:
81/A4, Levent
80890 Istanbul
Tel.: +90-212-279 60 70
Fax: +90-212-281 01 69
e-mail: info@ucessaglik.com.tr
www.ucessaglik.com.tr

USA
Surgimed Solutions, LLC
100 Union City Rd.
Prospect, CT 06712
Tel.: +1-203-758-5800
Fax: +1-203-758-5838
e-mail: info@surgimed-cart.com
www.surgimed-cart.com