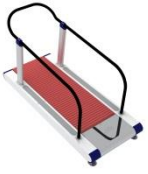


KATANA SPORT

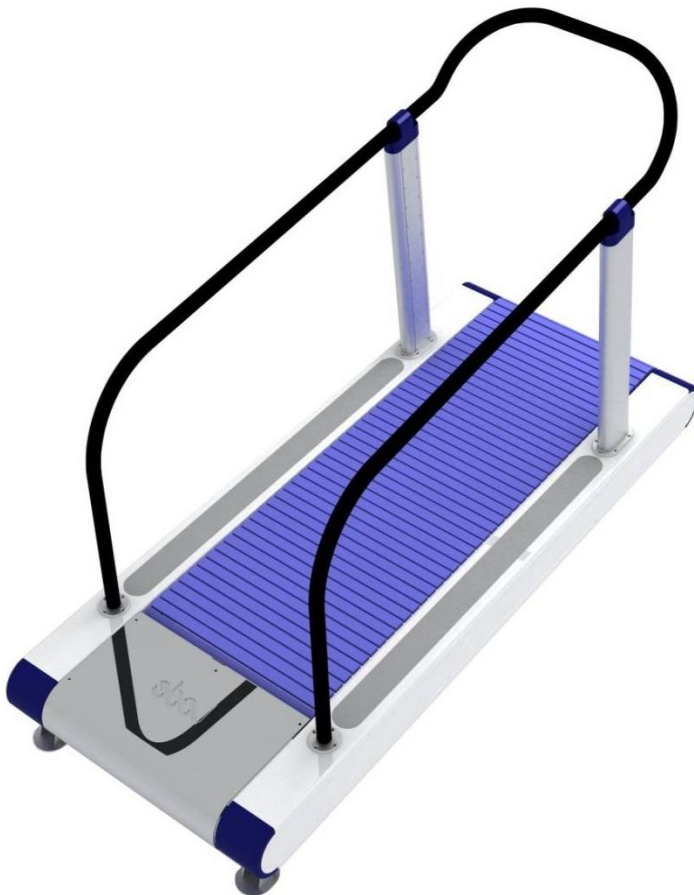


Unique Sports treadmill with Lode Slat Technology

Up to 40 km/h

Up to 25% positive and negative elevation

Perfectly natural running surface



the standard in ergometry

KATANA SPORT

Unique Slat Technology

Ultimate Connectivity

Low maintenance

Great running experience

Ever since Mr Fré Lode manufactured the first electro-magnetic cycle ergometer in 1952, accuracy, reliability and durability have been fundamental for further developments.

Over the years Lode BV has become the specialist in the complete spectrum of medical ergometry. Lode is world renowned as a manufacturer of high quality ergometers and the Lode brand stands for accuracy, durability and ergonomic design.

The Lode product range varies from bicycle ergometers and treadmills to recumbent, arm and supine ergometers and ergometry software.

Long-term experience in manufacturing medical equipment and continuous development to meet the changing requirements of the market make Lode a flexible and reliable partner. Together we can transform your specific ideas and wishes into custom made products.

Before leaving the factory all Lode ergometers are dynamically calibrated and, of course, all units are produced under the strictest quality control conditions.

Lode is ISO 9001:2000, ISO 13485:2008 and FDA certified and fulfills the EU Medical Device Directive (MDD) 93/42/EEC. Over years of use, service costs are almost negligible. In other words:

Lode, *the* standard in Ergometry.

The Katana Sport is a modern and reliable treadmill that can be controlled both manually and by external equipment.

The Katana Sport offers smooth acceleration and is continuously adjustable in a range of **0,5 – 30 (40) km/h** (0.3 – 18.6 (25.6) mph). With the **elevation** of 0-25%, and a walking surface of 190 x 70 cm this treadmill is *the* solution for use in sport medical settings.

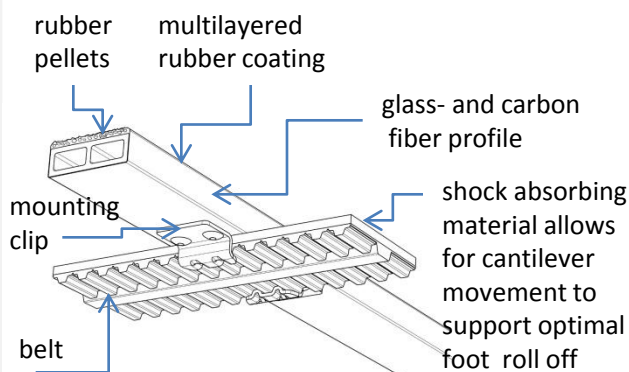
The treadmill is executed with a special **Lode Slat Technology** with 106 soft grip covered slats that allows for high speed and a natural walking and running experience. Its unique bearing technology delivers high speeds at low noise levels while needing low maintenance.

The treadmill can be connected to other Lode products and to **Lode Ergometry Manager** that allows for managing protocols and real time adjustments. Additional connectivity can be enabled by the optional **Communication Extension Card**



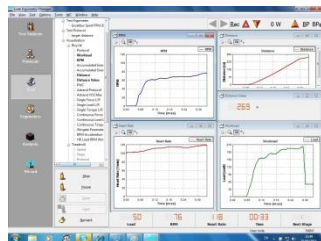
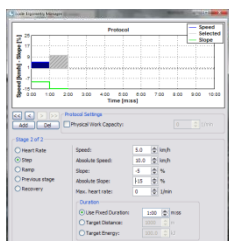
All Katana sport treadmills can be elevated 25%. Negative elevation of 25% is an option.

Lode Slat Technology



Compatible with Lode Ergometry Manager

Katana Sport is fully compatible with LEM version 9.3 and higher. The combination allows full protocol, speed and angle control as well as test subject maintenance.



Optional features

- Optional rear elevation of the treadmill up to 25% permits downhill walking in the same direction;
- Communication Extension Card with 2 * RS232 and 1 * USB connectors
- Mobile fall stop with safety belt
- Emergency stop
- Anti slip strips
- Entrance plate for e.g. wheelchairs
- Display unit
- Control unit
- Bottle holder
- Heart Rate, SpO₂
- Bluetooth or WiFi

Features for all versions

- The Katana Sport treadmill has a modern and stable design
- The front platform guarantees easy access for all test subjects
- Quality AC motor delivers precise speed control; there is no "lag" when the foot strikes the slats
- The treadmill is almost maintenance free: no greasing is required and the motor has no friction parts
- Quiet operation
- Low starting speed: a smooth acceleration from 0.5 km/;
- Speed adjustment in the range of 0,5 – 30 km/h (0.3 – 18.6 mph) for the Katana Sport 30
- Speed adjustment in the range of 0,5 – 40 km/h (0.3 – 24.8 mph) for the Katana Sport 40
- Speed adjustment in steps of 0,1 km/h (0.1 mph);
- Shock absorbing design for running comfort
- Stop feature with magnetic lanyard for safe use of treadmill
- 2 Lode Interface Bus connectors via NJ45 / RS485 interface for connection to other Lode equipment and PC with Lode Ergometry Manager

For executions with Programmable Control Unit

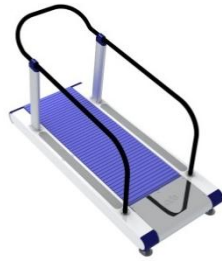
- Programming possibilities for user defined tests
- Well-known standard tests like Bruce or Balke can be preprogrammed;
- Programming possibilities for heart rate controlled running are optional available

Special treadmills with extraordinary dimensions for e.g. wheelchairs or roller-skates are also available. It is possible to provide a wider or longer running surface.

Please contact Lode or your distributor for a solution if you need a treadmill with specific specifications.

LODE SPORT MEDICAL RANGE

Katana Sport 30 | Katana Sport 40



| | Katana Sport 30 | Katana Sport 40 |
|---|--|---|
| Standard Speed range | 0.5-30 km/h 0,3-18,6 mph | 0.5-40km/h 0,3-24,8 mph |
| Positive elevation | 0-25% | 0-25% |
| Negative elevation | 0-25% (optional) | 0-25% (optional) |
| Walking surface | 70 x 190 cm 28 X 75 inch | 70 x 190 cm 28 X 75 inch |
| Step up height | 27 cm 10 inch | 27 cm 10 inch |
| Interface | optional standard optional | optional standard Optional |
| • RS232 • NJ45/RS485/LodeBus • USB | | |
| Maximum runner weight | 225kg 500 lbs | 225 kg 500 lbs |
| Dimensions (Lx W x H) | 250 x 106 x 145 cm 99*42*57 inch | 240*100*150 cm 99*42*57 inch |
| Weight | 350 kg | 350 kg |
| Power requirements | | |
| Voltage | 3* 200 V or 3 * 400 V | 3* 200 V or 3 * 400 V |
| Motorpower | 1.8 Kw | 1.8 Kw |
| Standard and safety norms | ISO 9001 :2008 ISO 13485:2003 IEC 60601-1/-1-2 | SO 9001 :2008 ISO 13485:2003 IEC 60601-1/-1-2 |
| Safety emergency stop | | |
| • Magnetic lanyard • Emergency stop button • Step-up plate stop • Mobile fall stop | standard optional standard optional | standard optional standard optional |

Excalibur Sport

Bicycle ergometer for sport medical applications with a peak power of 2500 Watt



Brachumera Sport

Arm ergometer for sport medical applications with a peak power of 2500 Watt



LEM (Lode Ergometry Manager)

PC software for managing Lode ergometry products, data acquisition, protocol generation and test subject maintenance



Lode B.V.
Zernikepark 16
9747 AN Groningen
The Netherlands
Tel: 31(0)50 5712811
Fax: 31(0)50 5716746

Distributed by:



COMPEK MEDICAL SERVICES, s.r.o. 17.listopadu 861, 506 01 Jičín
Tel.: +420 493 524 534
Mobil: +420 605 281 433
E-mail: info@compek.cz
Web: www.compek.cz

COMPEK MEDICAL SERVICES, s.r.o. Srážna 11, 831 01 Bratislava
Tel.: +421 2 4569 2569
Mobil: +421 908 758 793
E-mail: info@compek.sk
Web: www.compek.sk



ISO9001:2000 and ISO 134854:2003 certified

E-mail: ask@lode.nl
<http://www.lode.nl>