

*ergocar*



*Medical Equipment Trolley*

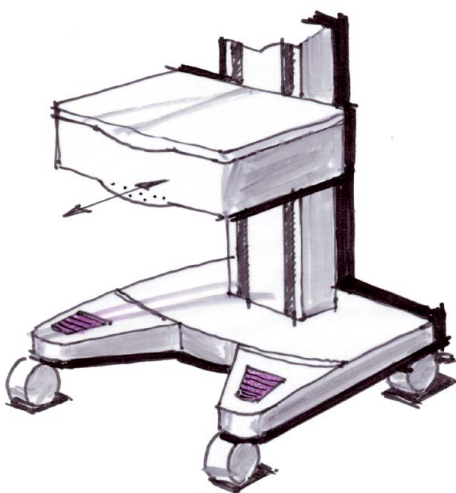
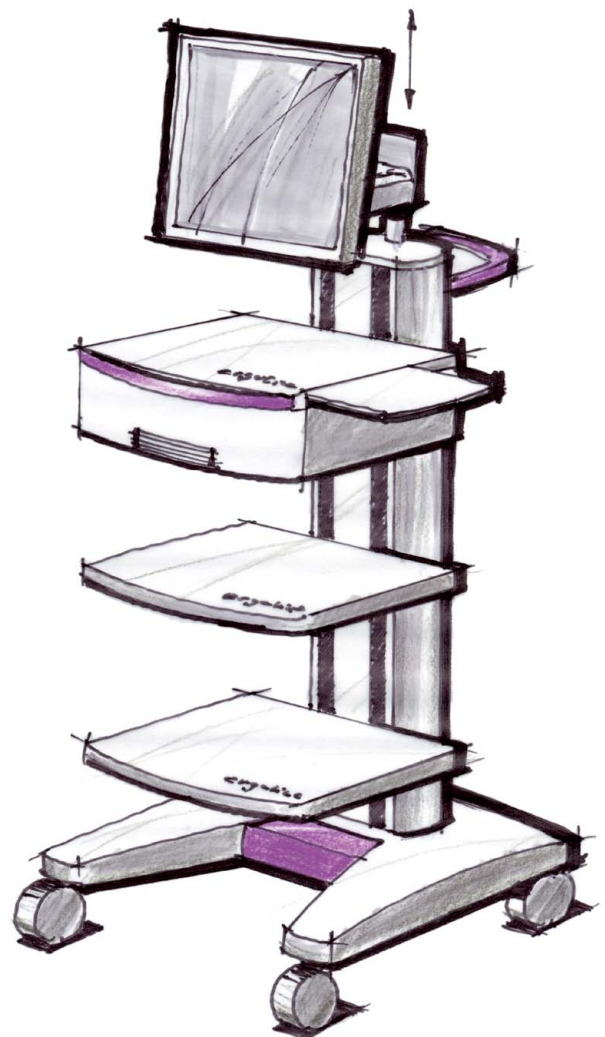
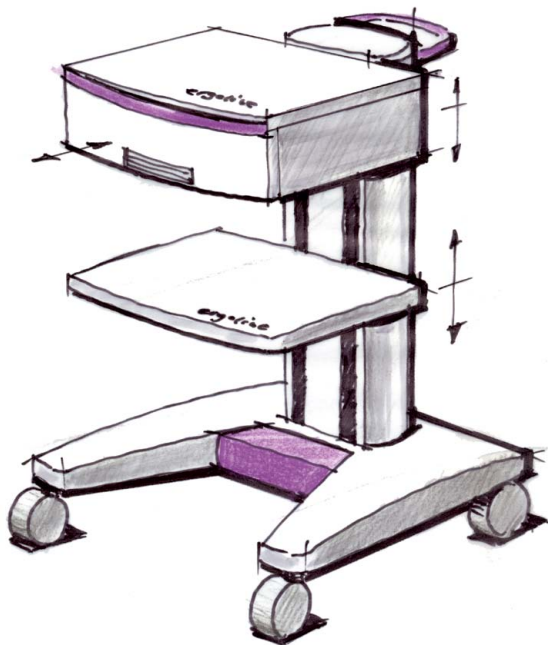
***ergoline***

# DESIGN

Good design manifests itself in the details - a convincing design concept provides the basis for the later effective use of a product.

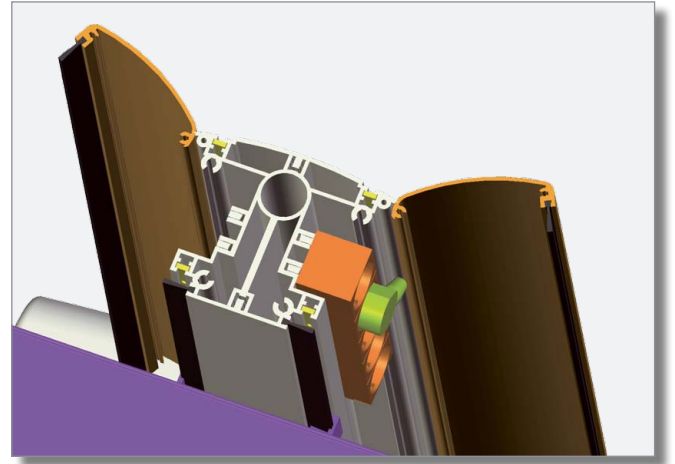
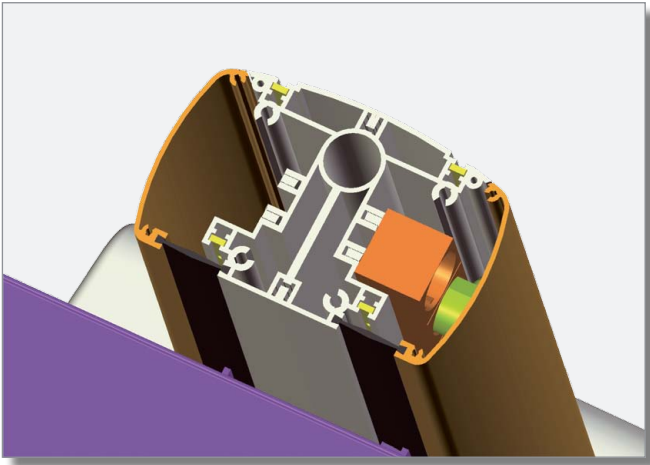
Function, ergonomics and design have to work as an unit to fullfill the different requirements.

ergocar



Jan. 09

# FUNCTION



# ergocar basic



# ergocar PC



# OPTIONS / ACCESSORIES



Drawer with cable outlet (e.g. for CTG sensors)



Board for printers without front edge (printer paper drawer)



Storage basket



Small basket mounted at the side of board / drawer



Mount for double TFT system (available also for sizes > 19")



Computer holder



Mousepad (mountable right or left)



Medical isolation transformer (4 A / 5 A / 6 A)  
optional with LAN, USB, RS-232 connectors



Supports for all suction electrode systems



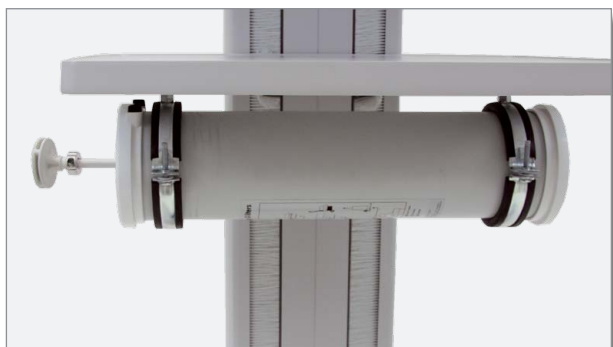
Push handle for ergocar



Different power strips



Casters in different sizes (conductive versions available)



Support for calibration pump (Ergo spirometry)



Gasbottle holder (for 2l or 10l gasbottles)



Universal rail in different lengths



Jointed arm with clamps (ECG cable)

## Technical data

Medical equipment trolley	ergocar basic / ergocar PC	
Load capacity	base frame, cpl.:	80 kg
	board:	20 kg (distributed load)
	drawer:	4 kg
Board mounting grid	30 mm	
<b>Dimensions</b>		
Width	600 mm	
Depth	600 mm	
Height	900 mm (ergocar basic)	1190 mm (ergocar PC ohne Monitor)
Storage space on board (W x D)	500 x 400 mm	
<b>Monitor supports</b>		
Mount	VESA 75 x 75 / 100 x 100	
Monitor weight	12 kg max.	
Monitor size (double monitor support)	up to 19 "	> 19 " (with support extension)
<b>Isolation transformer</b>		
Voltage	versions for 110 V / 230 V	
Power	800 VA / 1200 VA / 1400 VA	
Safety	due to IEC 60601	

**ergoline**

ergoline GmbH  
Lindenstrasse 5  
D-72475 Bitz  
Germany

Tel.: +49-(0)-7431 - 9894 - 0  
Fax: +49-(0)-7431 - 9894 - 128  
email: [info@ergoline.com](mailto:info@ergoline.com)  
internet: [www.ergoline.com](http://www.ergoline.com)

Autorizovaný obchodní a servisní partner:



**COMPEK MEDICAL SERVICES, s.r.o.**  
17. listopadu 861, 506 01 Jičín  
mobil: +420 605 281 433  
tel./fax: +420 493 524 534  
e-mail: [info@compek.cz](mailto:info@compek.cz)  
internet: [www.compek.cz](http://www.compek.cz)

**COMPEK MEDICAL SERVICES, s.r.o.**  
Strážna 11, 831 01 Bratislava  
mobil: +421 908 758 793  
fax: +421 2 3301 6145  
e-mail: [info@compek.sk](mailto:info@compek.sk)  
internet: [www.compek.sk](http://www.compek.sk)

Development and production of all ergoline products are subject to a certified quality management system according to DIN EN ISO 13485:2003.  
All products are CE-marked and fulfill the requirements of the Medical Device Directive 93/42/EEC.

Some of the illustrations in this brochure show options which must be purchased separately.  
The information provided is based on data valid at the date of printing.  
Subject to modifications.