

SAMSUNG

SAMSUNG MEDISON

# The Smart Choice **MySono U6**



CT-UB-ANS-SP-111115-BN

The  
Smart  
Choice

**MySono U6**



Samsung Medison is one of the world's leading researchers, developers and manufacturers of ultrasound and other medical imaging products. Founded in 1985, Samsung Medison was acquired by Samsung Electronics in February 2011. Throughout its history, the company has achieved a series of technological breakthroughs, such as introducing the world's first commercially available 3D and 4D diagnostic ultrasound scanners. Driven by an investment of 12 percent of revenues into R&D, its range of machines now covers everything from the lightest and most portable of scanners, to the very latest and most sophisticated in ultrasound technology. Samsung Medison also produces digital X-rays and other medical imaging products.

[www.samsungmedison.com](http://www.samsungmedison.com) / [marcomm@samsungmedison.com](mailto:marcomm@samsungmedison.com)

SAMSUNG

SAMSUNG MEDISON



# Quality through technology

## Revolutionary image quality

MySono U6 provides the ultimate in content optimization for a portable system. Vastly improved resolution allows you to provide the most accurate clinical outcomes.

- **QuickScan™**

QuickScan™ provides automatic image optimization at the push of a button.

- **Speckle Reduction Filter™ (SRF™)**

Samsung Medison's innovative SRF™ algorithm makes speckle noise a thing of the past.

- **Dynamic MR+2.0™ (DMR+ 2.0™)**

The powerful DMR+ 2.0™ software improves the contrast resolution of ultrasound images, enabling you to see subtle differences in tissue.

- **Spatial Compounding Image™ (SCI™)**

SCI™ greatly improves the signal-to-noise ratio and enhances resolution using compounding.

- **Auto IMT™**

A quick, automated method for measuring the Intima-Media Thickness of the common Carotid Artery. Auto IMT™ enables you to identify patients who are at high risk of arterial disease.

- **Full measurement package**

A range of general measurements and a full range of Cardiac, Gynecology, Obstetrics, MSK, pediatric and Vascular measurements are available in the MySono U6.

**Mobility redefined**

MySono U6 Superb Imaging, Ergonomics and Portability.

# If ergonomics are the issue

## Samsung Medison's compact hand carried ultrasound system

MySono U6 is a smart and lightweight ultrasound system with minimal power consumption that can be easily transported, operated, and stored. At the bedside, in the operating room, or near the sports field, MySono U6 is always ready for use.



- **Compact and lightweight**

MySono U6's slim design and 5.6 kg weight make it compact and easy to carry.

- **Ergonomic design**

Major key functions are grouped under the palm of your hand for maximum efficiency and applied ergonomics. MySono U6 cart is equipped with front and back handles for mobility.

- **High resolution 15" LED monitor**

MySono U6's 15" high resolution LED monitor delivers superb image quality.

- **Backlit keyboard and control panel**

MySono U6 features a full color backlit LED keyboard and control panel that enables you to work in dark surroundings.

# Workflow that enhances

## Workflow solutions to enhance patient throughput

MySono U6 enables you to work quickly and efficiently through its automated image optimization functions and extended measurement functions; it also enhances patient throughput by easy connection to image archiving systems.

- **SonoView™**

SonoView™ image management software offers the possibility of seamless integration with image archive systems or hospital PACS.

- **DICOM 3.0 connectivity**

MySono U6 supports DICOM Store and DICOM Storage Commit, to store ultrasound studies safely into an image archive.

- **Wired and wireless LAN support**

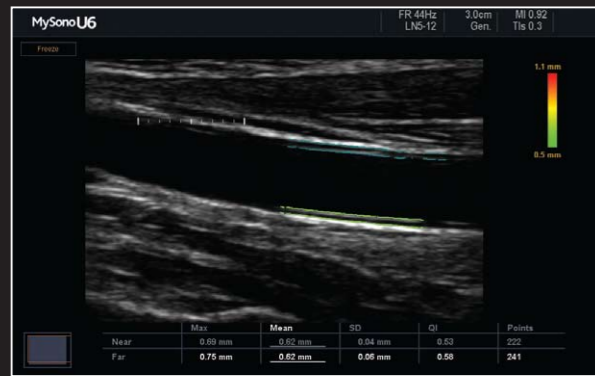
MySono U6 can receive the DICOM patient list and send DICOM study data through wired and wireless connections to the PACS or image archive.

- **Standby mode**

Simply opening the cover in standby mode allows complete operation within seconds.



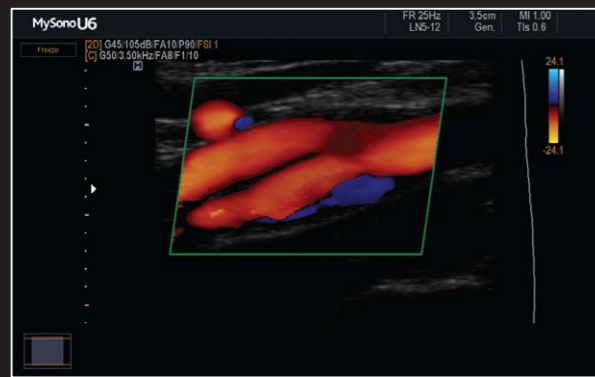
# Image Gallery



AutoIMT™



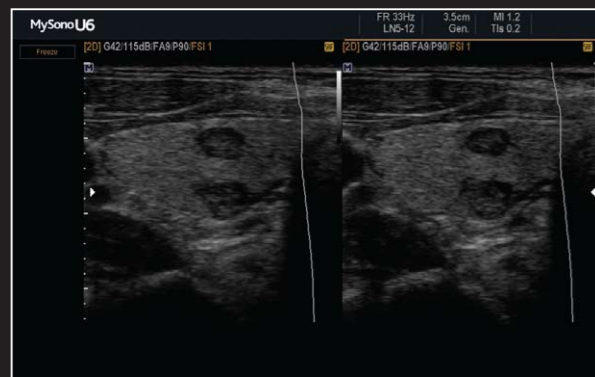
Liver SRF™ image



CCA bifurcation color Doppler



Rheumatoid arthritis



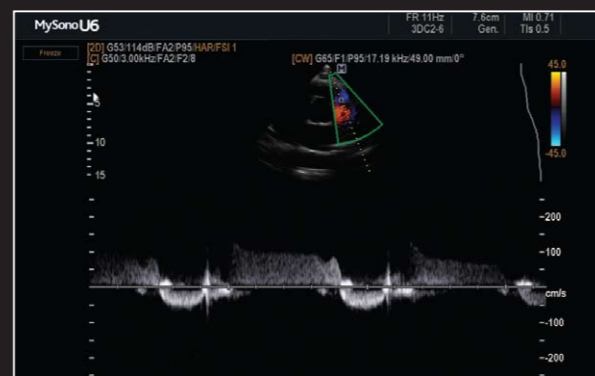
Thyroid mass in dual mode



GB Polyp in zoom



Parasternal short & long axis



Pulmonary trivial regurgitation with CW